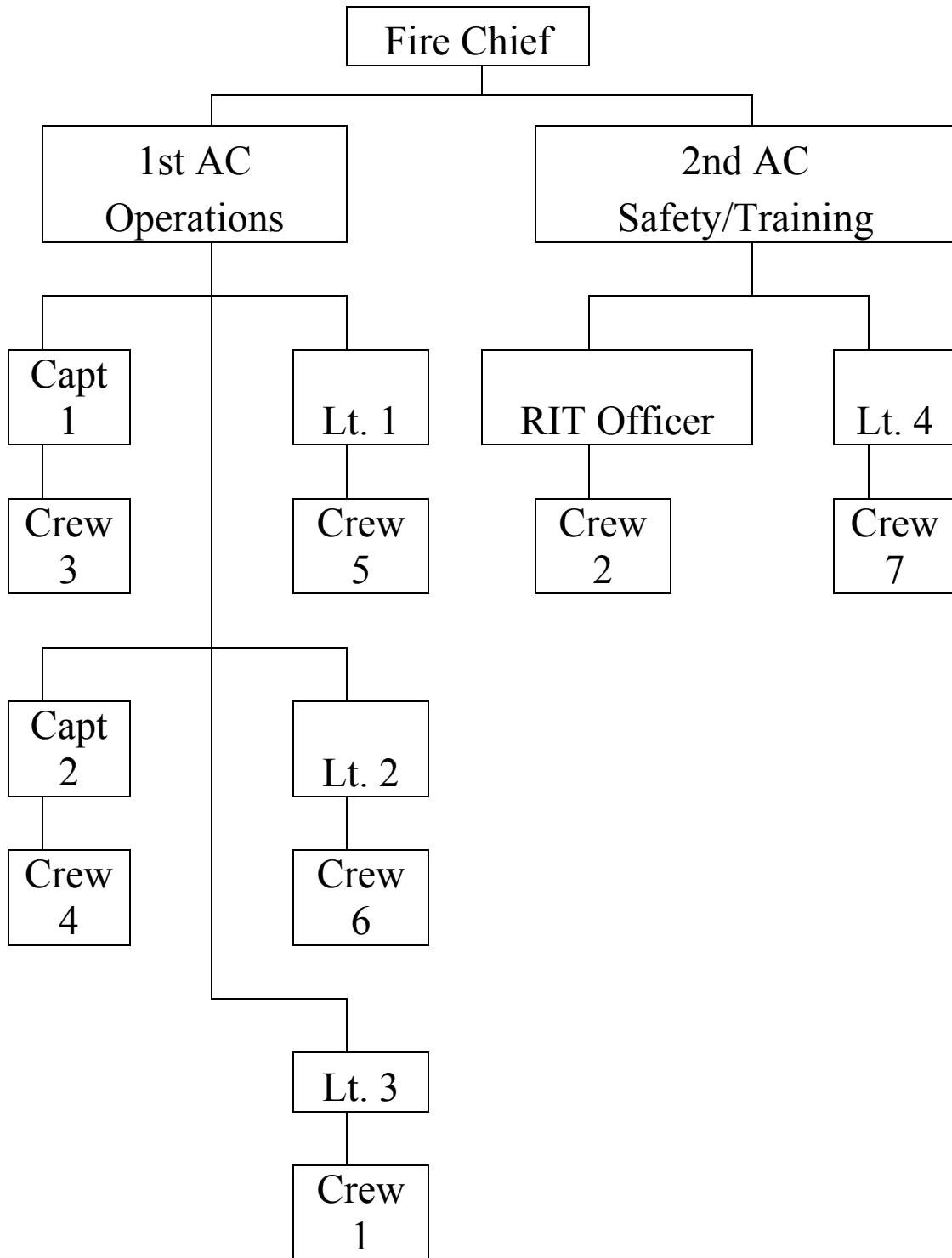


Grand Rapids Vol. Fire Department

Minimum Operation

Guidelines

Grand Rapids Fire Dept. Chain of Command



COMMUNICATIONS

PURPOSE: To provide guidelines for orderly and consistent radio communications.

A. DISPATCH DESIGNATIONS

1. The designated central dispatch is the Wood County Dispatch Center for all calls in Wood County or Portage County Dispatch Center for all calls in Town in Portage County . The term **Wood County Dispatch or Portage County Dispatch** will be used when referring to county dispatch.
2. The secondary or back-up dispatch location will be the Grand Rapids Fire Station. The term **Grand Rapids Base** or **Base** will be used when referring to this base.

B. UNIT IDENTIFICATION

1. Units will use plain language identification when conducting radio communications.
2. Each Officer will also have a radio identifier:
 - a. Grand Rapids CAR 1 (Fire Chief)
 - b. Grand Rapids CAR 2 (1st Assistant Chief)
 - c. Grand Rapids CAR 3 (2nd Assistant Chief)
 - d. Grand Rapids Captain 1 or Captain “then state last name”
 - e. Grand Rapids Captain 2 or Captain “then state last name”
 - f. Grand Rapids Lieutenant 1 or Lieutenant “then state last name”
 - g. Grand Rapids Lieutenant 2 or Lieutenant “then state last name”
 - h. Grand Rapids Lieutenant 3 or Lieutenant “then state last name”
 - i. Grand Rapids Lieutenant 4 or Lieutenant “then state last name”
 - j. Grand Rapids RIT Lieutenant or Lieutenant “then state last name”

NOTE: For local operations of fire ground frequencies the community names may be dropped.

C. TACTICAL FREQUENCIES

1. Channel 1 is Wood County Fire. This is used to acknowledge page, for going in service until base is manned, and for Command/Base to talk with dispatch.
2. Channel 2 is Portage County Fire. This is used to acknowledge page and for Command to talk to dispatch as a backup channel only.
3. Channel 3 is MARC 3 and used for Command, Safety, and Staging. Base will monitor this channel and record all important information with times
4. Channel 4 is Portage County Public Safety. This is used for all units going in service for calls in Portage County until our base is in service.
5. Channel 6 is VTAC1 and used for Fire Operations & Attack. Operations officer will monitor Channel 3 for information from IC & Safety.

6. Channel 8 is Fire Ground Blue and used for all fill site operations. Fill Site will monitor channel 3 for instructions from IC. Channel 8 will also be used for traffic control as directed by IC.
7. Channel 9 is Fire Ground White and used if need as Vehicle Staging. Staging will monitor channel 3 for information from Safety

Note: The Incident Commander may designate other frequencies as needed.

D. BASE RADIO OPERATIONS

1. Turn on indicator light to show radio is manned.
2. Contact Dispatching
 - a. Go in service to the correct dispatch center
 - Wood County Fire (channel 1) for calls in Wood County
 - Portage County Fire (channel 2) for calls in Portage County
 - b. Switch channel to MARC 3 (channel 3)
 - c. Ensure radio is in scan mode. If in scan mode, there will be a zig-zag line on the display screen. If it is not in scan mode, press P2 to put unit in scan mode
 - d. To talk to Wood County Dispatch
 1. Change to Wood County Fire (channel 1)
 2. Receive information
 3. Change to back to MARC 3 (channel 3)
 - e. To talk to Portage County Dispatch
 1. Change to Portage County Public Safety (channel 4)
 2. Receive information
 3. Change to back to MARC 3 (channel 3)
3. Pull street locator and/or maps for fire location
4. Pull fill site locator
5. Do not leave this position unless relieved
6. Control of radio room is the base radio operator's job. Limit the number of people in room.
7. Base radio operator is responsible to report to Command if minimum staffing will not be met. Second page will be requested if minimum staffing is not met
8. Base Radio Operator will let Commander know if extra personnel are standing by at station.
9. Upon receiving emergency by telephone
 - a. Name, Address, Phone number, & problem
 - b. Advise them to contact Wood or Portage County Dispatching
 - c. Contact Wood or Portage County Dispatch on the phone or radio to have department paged as needed.

E. PRESCENE RADIO OPERATIONS

1. Messages will be kept short, precise, and use plain talk only (no 10-codes). Press the mic key and wait about 1 second before speaking. Speak clearly into the microphone, holding it 2-3 inches away from your mouth.

2. Chief Officer(s) will acknowledge the page to the correct dispatch center.

Wood County Fire (channel 1) for calls in Wood County

Portage County Fire (channel 2) for calls in Portage County

Example: “Wood County Dispatch, Grand Rapids CAR1 copy page”

3. Any unit going in service will radio the correct dispatch center until our base is in service.

Wood County Fire (channel 1) for calls in Wood County

Portage County Public Safety (channel 4) for calls in Portage County

Example Chief Officer: “Wood County Dispatch, Grand Rapids CAR 2 in service responding to 1234 Kellner Rd for a reported structure fire”

Example for Station Rigs: “Wood County Dispatch, Grand Rapids Engine 1 in service with 6 responding to 1234 Kellner Rd for a reported structure fire”

4. Once our base is manned, all other units will go in service on channel 3.

Example if Base is manned: “Grand Rapids Base, Grand Rapids T2 in service responding to 1234 Kellner Rd for a reported structure fire”

5. All units approaching the scene will radio the correct county dispatch upon its' arrival until base is in service.

Channel 1 for calls in Wood County

Channel 4 for calls in Portage County

Channel 3 if Base is in service

Example: “Wood County Dispatch, Grand Rapids CAR 2 on scene.”

Example: “Grand Rapids Base, E1 on scene.”

F. FIRE GROUND RADIO OPERATIONS

1. The first arriving chief officer will conduct a scene size up and give a report to all inbound unit on MARC 3 (channel 3).

EXAMPLE: "All Grand Rapids units, we have a two-story wood frame structure with fire showing on the “C” side. Car 2 assumes Kellner Command”

2. First arriving engine will radio command on MARC 3 (channel 3) as they approach the scene and give a visual scene size up.

EXAMPLE: "Kellner Command, E1 on scene with fire showing on the "C" of the structure. What are your orders?"

Note: Once orders are received, E1 will switch to VTAC 1 (channel 6)

All other arriving units will radio command if safety has not been set up yet to receive their orders.

3. The transfer of command will only happen after a face to face meeting has happened on scene with the Officer of Engine 1 that is in command and the senior officer assume command. Once command as been transferred, a report will be made.

Example: "All Grand Rapids units, Grand Rapids CAR 1 has assumed Kellner Command"

The transfer of command does not have to be done. Should the senior officer wish to leave a junior officer in command, it will be his/her call.

4. Units released from an incident should radio base on MARC 3 (channel 3) to inform of their status.
5. Non-emergency or administrative radio traffic may be broadcast for official business and use only and when the frequency is clear. Incident related communications will always take priority over other traffic.
6. The term "**MAYDAY**" will be used by any unit or company encountering an immediately perilous situation (lost, trapped, or in trouble) and will receive the highest radio priority.

Example of Mayday Radio Traffic:

CREW: "Mayday, Mayday, Mayday".

IC: "All units on the fire ground, we have a Mayday, emergency traffic only. Unit announcing the Mayday, go ahead."

CREW: "This is Interior Attack, we're trapped in the basement and we need help. We entered the building from the C side sliding doors. Floor collapsed on us. Nor fire danger at this time"

IC: "Command copies, Interior Attack trapped in the basement. Command to RIT."

RIT: "RIT....., go Command"

IC: "RIT, you are being activated and your task is to locate and rescue Interior Attack. They entered the C side of building and are trapped in the basement."

RIT: "RIT, being assigned to locate and rescue the Interior Attack trapped in the basement."

IC: "Command the Staging."

STAGING: "Staging, go ahead command."

IC: "Send crew of 3 to command to assist the RIT Team."

STAGING: “Staging copies, team of 3 to command to assist the RIT Team”.

At this point the IC will direct all non emergency fire ground communication to switch to another channel. The down firefighter, sector officer, RIT, and IC will remain on the channel until rescue has been done.

G. SAFETY & STAGING RADIO OPERATIONS

1. Once Safety has been set up, the Safety Officer will announce this on MARC 3 (channel 3).

EXAMPLE: “SO to all units and fire ground personal, Safety/Staging has been set up (give location). All inbound vehicle traffic will be directed to the Safety Officer.

2. Safety will now talk to all vehicles still responding to instruct them on staging of vehicles and ground personal for accountability.
3. Safety will monitor for any requests from IC for vehicles or ground personal.
4. Safety will, if the incident calls for it, assign a separate staging officer. This will be announced on MARC 3 (channel 3).

EXAMPLE: “Staging to all inbound units, Vehicle Staging has been set up (give location). All inbound units are to switch to FIRE GROUND WHITE (channel 9).”

5. Staging will now switch to Fire Ground White (channel 9) and talks will all inbound vehicle. Once in staging, staging officer will direct vehicle personal to report Safety Officer for fire ground accountability and assignments.

H. FILL SITE RADIO OPERATIONS

1. Once the fill site has been set up, radio command on Channel 3 (MAR 3).

Example: “Fill Site to Command. We have a fill site set up at (give location) All tankers are to switch to FIRE GROUND BLUE (channel 8)”

2. Fill Site officer will now talk with inbound tanker traffic.
3. Tankers will remain on this channel for the duration of this call.

APPARATUS RESPONSE

PURPOSE: To provide a guideline for which vehicle will respond to various types of fire calls

Staging for all Scenes: Unless directed, staging of vehicles will be set up about one (1) block from the scene

Carbon Monoxide Calls and Assist the Ambulance Calls

Squad For personnel

Single Vehicle Accident 10-50

Engine 1 Foam/Water/Extrication
Squad For personnel
Traffic Control
Brush Trucks Traffic Control
Tanker 3 (as needed) Water

Multi Vehicle Accidents 10-50

Engine 1 Foam/Water/Extrication
Engine 3 Foam & Water for Protection
Squad For personnel
Traffic Control
Brush Trucks Traffic Control
Tanker 3 (as needed) Water

Vehicle Fire Outside or on Highway(Not in Structure)

Engine 1 Attack
Tanker 3 Water
Squad Personnel
Brush Trucks Traffic Control
Tanker 2 (as needed) Water

Vehicle Fires in Structure's or near.

Structure Fire Response

Wildland Fire

Brush 1 Attack
Tanker's Attack/Water
Engine 1 Structure Protection/attack
Engine 3 Water Supply
Brush 2 Attack/Personnel
Squad Personnel

Airport Calls (aircrafts in structure's or near)

Structure Fire Response for Hydrant

Structural Fires

Close to a Hydrant

Engine 1	Attack
Tanker's	Water
Brush 2	Hydrant Fill Site
Ladder 1	Backup Engine
	Vent Crew
Engine 3	Backup Fill Site
	Backup Engine
Squad	Personnel
Brush 1	Personnel

No Hydrant in Area

Engine 1	Attack
Tanker's	Water
Engine 3	Fill Site
Ladder 1	Backup Engine
	Vent Crew
Squad	Personnel
Brush 2	Personnel
Brush 1	Personnel

Mid State Fire Calls Structure

Engine 1	Attack
Ladder 1	Attack
Engine 3	Supply Engine
Tankers	Water
Squad	Personnel
Brush 2	Personnel
Brush 1	Personnel

Mutual Aid Call

The OIC, Officer, or Senior FF at the station will decide what to be sent.

If this is a MABAS Call, send only equipment that is listed on the card. Refer to MABAS book located in the Radio Room.

This is a guideline for Non-MABAS mutual aid Fire Calls

Request for Engine and personnel:	Engine 3 and Squad
Request for Engine Crew for station coverage in Wis Rapids:	Engine 1 - Attack Brush 2 - Hydrant
Request for Supply Pumper for fill site:	Engine 3
Request for Tanker(s) out side area:	Tanker 3
(Note: If both tankers are need out side our area, call tanker(s) in to cover our area)	
Request for personnel only:	Squad and Brush 2

PROTECTIVE CLOTHING

PURPOSE: To assure that all personnel are prepared to safely begin fire or rescue operations immediately on arrival at an emergency scene.

SCOPE: This guideline shall apply to all personnel operating at the scene of any emergency incident or training exercise.

ENFORCEMENT: As with any safety guideline, primary responsibility rests with each individual. Department Officers are responsible for enforcement of this guideline.

A. PROTECTIVE CLOTHING DEFINITION

1. For the purpose of this guideline, full protective clothing will consist of the following:
 - a. Helmet with eye protection
 - b. Turn-out coat with liner
 - c. Turn-out pants with liner
 - d. Boots
 - e. Gloves
 - f. Nomex or PBI hoods

B. PROTECTIVE CLOTHING PROVIDED

1. Each member will be issued protective clothing by the Fire Department.
2. Each member will be responsible for their protective clothing, including care and maintenance. Any lost items shall be reported to the Fire Chief.
3. Alterations to any protective clothing, such as removal of coat or pants liners, is prohibited.
4. All protective clothing shall meet the provisions of the National Fire Protection Association and COMM 30 of the Wisconsin Administrative Code.

C. PROTECTIVE CLOTHING USE

1. Personnel should wear full protective clothing when responding to incidents. Protective clothing should be donned before boarding the apparatus. Full protective clothing is optional for drivers and command officers during the response.
2. Emergency operations will not begin until personnel have donned all necessary protective clothing. Personal safety will not be compromised in order to increase the speed of emergency operations.

3. Full protective clothing shall be worn by all personnel operating power tools, hydraulic tools, or forcible entry tools. Full protective clothing is also required for all personnel in an area where these tools are being used.
4. Personnel operating at the scene of a rescue or recovery incident will wear whatever equipment is necessary to assure personnel safety during the incident.
5. Gloves will be worn at all times when hand tools, power tools, hose, ladders, or other equipment is used that could cause injuries to the hands. This includes all work details and training exercises.
6. Helmets with chinstraps in place shall be worn by all personnel working in areas where there is a possibility that tools, equipment, or debris from above may fall.
7. On wildland fires where structures are not immediately in danger, or "crowning" has not occurred, turnout coats and pants may be substituted with Nomex coveralls that are carried on the department vehicles. Also, high-top leather boots with steel toes may be worn instead of turnout boots.
8. Damage to protective clothing shall be reported to the Fire Chief as soon as possible. The Chief shall examine the damage article and order it replaced or repaired.
9. Incident Commanders may use their discretion to determine the appropriate level of protective clothing required for personnel working at incidents.

SELF-CONTAINED BREATHING APPARATUS

PURPOSE: The use of self-contained breathing apparatus (SCBA) is an essential part of the complete personal protective equipment package provided for Fire Department members. All personnel are expected to use SCBA whenever the need for respiratory protection is indicated.

SCOPE: This guideline will apply to all personnel operating at the scene of any emergency incident or training exercise. It is the Department's policy that personnel are not to be exposed to any hazardous atmosphere without the benefit of SCBA's.

ENFORCEMENT: Each member is responsible to work within this guideline.

A. DEFINITIONS

1. Use of SCBA: Wearing of SCBA with face piece in place, connected to the regulator, and breathing air from the SCBA cylinder.
2. Hazardous Atmosphere: Shall include the following:
 - a. Any atmosphere that is contaminated with smoke, gases, or other by-products of combustion.
 - b. Any atmosphere that contains any known contaminants not normally present in clean air.
 - c. Any atmosphere that is oxygen deficient or suspected of being oxygen deficient.

B. SCBA APPLICATIONS: The use of SCBA is mandatory for all personnel working under the following conditions:

1. Where the atmosphere is known to be hazardous.
2. Where the atmosphere is suspected of being hazardous.
3. Where the atmosphere may rapidly become hazardous:
 - a. In an active fire area.
 - b. Inside any building involved in fire.
 - c. In a potential fire or explosion area, such as a gas leak or fuel spill.
 - d. Where the smoke is visible in the atmosphere, including vehicle fires, dumpster fires, and outdoor rubbish fires.

- e. Where toxic products are present or suspected of being present, or could be rapidly released without warning.
- f. In unventilated confined spaces, unless specific tests are performed to assure the atmosphere is safe.
- g. In any below grade areas where an emergency exists, unless specific tests are performed to assure the atmosphere is safe.
- h. In any areas suspected of containing carbon monoxide, including all areas under overhaul after a fire.

C. SCBA USE RULES

1. Personnel using SCBA shall wear full protective clothing.
2. Personnel who use SCBA shall not have facial hair or beards that may interfere with the face piece seal. If eyeglasses are worn, the member shall use frames that do not pass through the seal area of the face piece.
3. SCBA removal is at the discretion of the Company Supervisor with the approval of the Incident Commander. Premature removal should be avoided especially during overhaul operations. Before removing SCBA, the atmosphere must be free of visible smoke the area must be thoroughly ventilated with provisions for continuous ventilation during the overhaul operation.
4. Each member is responsible for returning to service their SCBA Mask. If a problem is found with mask unit, it shall be tagged "out-of -service" and scheduled for repairs.

INCIDENT SAFETY

PURPOSE: To maintain the highest degree of safety for all personnel. To maintain this safety, we will follow the NIMS, ICS, and use our local accountability system on all calls

A. INCIDENT PERIMETER

1. The incident perimeter shall be the area inside an imaginary boundary that contains the potential hazards as a result of the incident.
2. The boundary is flexible, and is altered by various factors:
 - a. Areas of falling debris potential.
 - b. Areas of potential explosion.
 - c. Areas of smoke drift.
 - d. Areas subject to structural collapse.
 - e. Location of fire in relation to the center of the street or road and clear areas around the building (or vehicle).
3. All personnel entering the designated fire ground perimeter shall:
 - a. Wear full personal protective gear and SCBA.
 - b. Have crew intact.
 - c. Be assigned to a task, division, or group.
4. Yellow fire-line tape is used to keep civilians out of an area where a hazard exists. This tape can also be used as a warning device for members authorized to operate within the perimeter.
5. Special hazards, such as hazardous materials incidents, will require specific perimeter restrictions. All members working at these incidents must be informed of the hazard areas.

B. TACTICAL POSITIONING

1. Positioning may affect the safety/survival of personnel. Members must use caution when placed in the following positions:
 - a. Above the fire (floors/roof).

- b. Where the fire can move behind them.
 - c. Where supervisors cannot control position/retreat.
 - d. When involved with opposing fire-streams.
 - e. Combining interior and exterior attacks.
 - f. With limited access- one way in or out.
 - g. Operating under involved roof structures.
 - h. In areas containing hazardous materials.
 - i. Below grade fires (basements, etc).
 - j. Above or below grade perimeter.
2. Personnel safety is the primary reason for an effective and well timed offensive / defensive decision.

IS THE RISK TO PERSONNEL WORTH THE PROPERTY WE WILL SAVE?

3. When operating in the defensive mode, members should position as far from the involved area as possible while remaining effective. The intent is to use safe positions where possible in order to safeguard against sudden hazards such as backdrafts, structural collapse, etc.
4. When operating in an offensive mode, be aggressively offensive. A coordinated interior attack, directed at knocking down the fire, eliminates most safety problems.
5. Command must limit the number of personnel within the perimeter to those assigned to a necessary function. All personnel will be:
- a. Positioned in staging,
 - b. Assigned to a task or working within a division/group, or
 - c. Assigned to a Resource or Rehabilitation areas.

Individuals or crews must be restricted from wandering about the emergency scene. If personnel are not assigned to an area, or do not have a staff function to perform, they shall remain outside the fireground perimeter.

6. Ground crews must be notified and evacuated from interior positions before Aerial water-streams go into operation.

DO NOT OPERATE EXTERIOR STREAMS INTO AN AREA WHERE INTERIOR CREWS ARE WORKING!

C. LADDERING

1. When laddering the roof, extend the tip of the ladder 2 to 3 feet above the roof line. This will provide a visible means of egress/escape.
2. When laddering buildings under fire conditions, place ladders near building corners or fire-walls. These positions are generally more stable if the structure fails.
3. When working above or below grade, try to provide at least two separate escape routes. Stairways, ladders, exits, etc, at opposite ends or diagonal corners of the building is preferred.

D. DIVISIONS/GROUPS

1. Personnel safety is the primary reason for organizing the scene. Dividing the scene into work areas, with designated supervision, will provide a way to control both the position and function of companies.
2. Division or group supervisors must account for the position and welfare of crew members.
2. Crews must not leave assigned position unless directed by the division or group supervisor.

E. REHABILITATION

1. Supervisors must frequently check the physical condition of their crew. When crews show signs of serious physical or mental fatigue, the entire crew should be reassigned to Rehabilitation (REHAB). When Squad is on scene, it will be set up as the REHAB area.
2. Companies will request reassignment to REHAB from the division or group supervisor. The request must indicate the crews' position and shall advise the need for a replacement crew
3. Individual crews shall not report to the REHAB area unless assigned by Command.
4. Crew members should report to and remain intact while assigned to REHAB.

F. SAFETY OFFICER

1. Command shall activate a Safety Officer at incidents involving an extreme danger to personnel. Command should activate this position at any situation where it will be advantageous to the overall safety of operations.
2. Activation of the Safety Officer in no way reduces the responsibility of all supervisors for the safety of their crews. Each member must use common sense and work within the intent of safety procedures.

G. STRUCTURAL COLLAPSE

1. Structural collapse is always a possibility when a building is subject to intense fire.
2. Signs of potential collapse are:
 - a. Cracks in exterior walls.
 - b. Bulges in exterior walls.
 - c. Sounds of structural movement - creaking, groaning, etc.
 - d. Smoke or water leaking through walls.
 - e. Flexible movement of a floor or roof where firefighters walk.
 - f. Interior or exterior bearing walls or columns leaning.
 - g. Sagging or distorted roof-lines.
3. These construction features or conditions have been known to fail prematurely, or contribute to early structural failure:
 - a. Parapet walls.
 - b. Large open (unsupported) areas, such as; supermarkets, warehoused, school, gyms, etc.
 - c. Large signs or marquees which may pull away from weakened walls.
 - d. Ornamental or secondary front or sidewalls which may pull away and collapse.
 - e. Lightweight truss, bar joist, or bowstring truss roof assemblies.

- f. Unprotected metal beams and columns.
4. It is Command's responsibility to monitor collapse potential.

H. EVACUATION

1. When the extent of the fire prohibits control, or when the structure becomes unsafe, interior operations should be abandoned.
2. When conditions in the building become unsound:
 - a. Evacuate.
 - b. Regroup.
 - c. Do a PAR (personnel accountability report).
 - d. Re-deploy.
3. The method of evacuation selected will depend on the following circumstances:
 - a. Severity of hazard.
 - b. Type and extent of hazard.
 - c. Area affected by the hazard.
4. When an imminent hazard prompts an evacuation, notify all personnel using an **EMERGENCY TRAFFIC** on all radio frequencies being used. In addition, 3 successive blasts on one of apparatus air-horns will be given.

**Example: “BREAK... BREAK... BREAK... EMERGENCY TRAFFIC...
ALL CREWS EVACUATE THE STRUCTURE”**

- a. Crews will assemble and promptly exit to a safe location.
 - b. Sector supervisor will again account for all crew members.
 - c. Division or group supervisors will account for all crews.
5. Evacuation is complete when all crew members are accounted for.
 6. When the evacuation is complete, a more specific evaluation of the hazard can be made.
 7. Evacuation generally involves a shift from offensive to defensive operations.

MAKE SURE THAT EVERYONE GETS THE WORD THAT THE STRATEGY HAS CHANGED.

8. Crews retreating from interior operations often need hose-line protection. These situations represent a major function of back-up lines.

I. SEARCH AND RESCUE

1. Before entering an area to be searched, all search members should be familiar with a specific search plan including the overall objective, the search area, individual
2. Whenever possible, searches shall conducted by two or more members of a team.
2. Supervisors must be aware of the location and function of crew members during search operations.
3. Whenever a search exposes the crew to fire conditions (especially above the fire floor), the search team shall be protected with charged hose-lines as soon as possible.
4. If search crews operate without a hose-line, life-lines should be used when working in conditions of limited visibility.

J. MAYDAY

The term "May-Day" typically will be used in the following situations:

- By the member who is lost, trapped, or in trouble.
- By the company officer, sector officer, or other member who cannot account for an assigned fire fighter who is operating in the hazard zone. This "May-Day" would generally occur following a PAR report that fails to locate/account for the suspected lost member.
- By a member who witnesses or has confirmed that a fire fighter is lost or in trouble.

The term "**MAYDAY**" will be used by any unit or company encountering an immediately perilous situation (lost, trapped, or in trouble) and will receive the highest radio priority.

Example of Mayday Radio Traffic:

CREW: "Mayday, Mayday, Mayday".

IC: "All units on the fire ground, we have a Mayday, emergency traffic only. Unit announcing the Mayday, go ahead."

CREW: “This is Interior Attack, we’re trapped in the basement and we need help. We entered the building from the C side sliding doors. Floor collapsed on us. No fire danger at this time”

IC: “Command copies, Interior Attack trapped in the basement. Command to RIT.”

RIT: “RIT...., go Command”

IC: “RIT, you are being activated and your task is to locate and rescue Interior Attack. They entered the C side of building and are trapped in the basement.”

RIT: “RIT, being assigned to locate and rescue the Interior Attack trapped in the basement.”

IC: “Command the Staging.”

STAGING: “Staging, go ahead command.”

IC: “Send crew of 3 to command to assist the RIT Team.”

STAGING: “Staging copies, team of 3 to command to assist the RIT Team”.

At this point the IC will direct all non emergency fire ground communication to switch to another channel. The down firefighter, sector officer, RIT, and IC will remain on the channel until rescue has been done.

Abandoning fire fighting positions during the rescue effort should be avoided. Command and crews should take aggressive measures to protect trapped or missing fire fighters from the effects of the fire. Efforts should be concentrated on reinforcing existing positions and keeping the fire out of the rescue area and providing appropriate ventilation and lighting. In some situations it may be appropriate to write off some areas of the building in order to relocate companies and crews to better protect the rescue effort.

Things to remember and do if you are the down firefighter

- Personnel giving the MAYDAY shall identify their team; provide their location, fire or hazard conditions, and the entry point used.
- PASS device shall be turned on to provide rescuer with an audible signal for locating missing or trapped personnel.
- Conserve remaining air the best you can (breathing and talking)

TACTICAL PRIORITIES

PURPOSE: To provide a basic format for tactical operations.

GOAL: To provide a guideline which emphasizes proven tactical principles along with the safety of department personnel.

A. DEFINITIONS

RESCUE : Action taken to protect occupants of involved structures or fire areas. To remove threatened persons from danger.

FIRE CONTROL: Actions taken to stop the forward progress of a fire and bring it under control.

PROPERTY CONSERVATION: Action taken to stop or reduce the loss of property.

B. POLICY

1. Tactical priorities are separate, yet inter-related, activities.
2. Tactical priorities are addressed in the following order:
 - a. Rescue.
 - b. Fire Control.
 - c. Property Conservation.
3. While Command must complete each priority in its' order, Command must overlap the activities of each to reach the current goal.

C. RESCUE

1. **PRIMARY SEARCH:** All initial actions will concentrate on the quick, thorough completion of a primary search. Actions are based on the size-up of conditions. Three available options include:
 - a. **NOTHING SHOWING ON ARRIVAL:** Command must order a rapid thorough search.
 - b. **WORKING FIRE:** Command may direct fire control operations in support of rescue activities, in order to gain entry and control access and escape. However, the priority remains RESCUE.

- c. FULLY INVOLVED: The extent and location of the fire may rule out a primary search. If conditions prohibit a primary search, Command will advise Companies to skip that task.

EXCEPTION: Command may skip the *Primary Search* task if there is certainty that there is no one in the structure, such as; a dwelling fire where the family meets the FD upon arrival and assures that everyone is out.

2. SAFETY OF PERSONNEL

- a. Command retains responsibility for the safety of operating personnel.
- b. Firefighters conducting a *Primary Search* shall wear full protective clothing and SCBA.
- c. Whenever possible, search teams are to be supported by charged hose-lines.
- c. Firefighters assigned to *Rescue* must note the path they followed during entry and be aware of alternate escape routes.

3. COMMUNICATIONS

- a. Search teams will:
 - 1. Report the discovery of fire victims, their location, and any help that is needed to carry out the rescue.
 - 2. Report fire location and direction of fire travel.
 - 3. Report the completion of their search in their assigned area.

- 4. SECONDARY SEARCH: Command must order a *Secondary Search* when *Fire Control* is achieved.

D. FIRE CONTROL

- 1. Command will select a strategy based upon factors considered during size-up. Size-up will include the use of the three sources of fireground information: visual factors, reconnaissance, and pre-fire planning. Factors considered during size-up include:
 - a. Fire extent and location.
 - b. Fire effect.

- c. Life hazard.
- d. Savable property.
- e. Entry and tenability.
- f. Ventilation.
- g. Resources.

2. FIRE CONTROL STRATEGIES

- a. OFFENSIVE- An interior attack, with related support, directed toward quickly entering and bringing the fire under control.
- b. DEFENSIVE- An exterior attack, directed to first reduce fire extension and then bringing the fire under control.

3. BASIC STRATEGIC PLANS

a. OFFENSIVE PLAN-

1. Take Command.
2. First line- 1.75 inch line, aggressive, well-placed, interior attack from the unburned side.
3. Provide support activities.
4. Conduct primary search.
5. Second line- 1.75 inch line, back-up first line or cover secondary points of egress.
6. Pump water- provide adequate water for attack crews.
7. Quickly check results- react as necessary.
8. Third line – 2.5 inch line pull and charge for exterior attack.

4. FIRE STREAMS

- a. INTERIOR STREAMS- Handlines used for interior fire control or to support search efforts shall be at least 1.75 inch.
- b. EXTERIOR STREAMS- Use BIG fire streams (BIG FIRE-BIG

WATER). Solid stream tips provide better penetration for heavy streams.

5. FIRE CONTROL CONSIDERATIONS

- a. FIRE CONTROL actions must support any RESCUE effort.
- b. Situations can change and demand a change of strategy.
- c. DO NOT direct exterior fire streams into a structure while people are in the building or area.
- d. An interior (Offensive) attack starts from the unburned side.
- e. Command must provide support (including forcible entry and ventilation) to carry out FIRE CONTROL.

6. SAFETY OF PERSONNEL

- a. Command must monitor changing conditions which effect the safety of personnel.
- b. Command must enforce the proper use of protective equipment and accountability.

C. PROPERTY CONSERVATION

1. FIREGROUND CONSIDERATIONS

- a. The earlier salvage operations begin, the less damage there will be.
- b. Property conservation actions are based upon the resources (particularly staffing) that are available to carry them out.
- c. Command should require additional staffing if salvage operations require assistance.
- d. If the fire is out shut-down fire streams to stop further water damage.
- e. Command must remember the trade-off between damage caused by the attack, and the damage caused by the fire.

2. SAFETY OF PERSONNEL

- a. Property conservation efforts move with more caution, compared to RESCUE or FIRE CONTROL. Personnel hazards are identified (i.e. structural hazards, hazardous materials, etc) and explained to assigned crews.

CARBON MONOXIDE CALLS

PURPOSE: The Fire Department is responsible only for investigating a reported carbon monoxide problem or a detector sounding. We are not there to repair the problem. We will advise the occupant(s) of our findings issue a Notice of Findings Form and assist them in exiting the structure (if necessary).

Scope: Our first priority is to protect human life. If there are any indications of illness related to this incident, the Officer in Charge will request an Ambulance be dispatched to the scene.

Objective: Grand Rapids Fire Department Members should follow the following guidelines when responding.

1. Squad with a minimum of (4) four fire fighters will respond to the scene (non 10-33).
2. Two fire fighters will enter the structure in full turn out gear including SCBA with face piece ready with two fire fighters on standby in full turn out gear including SCBA with face piece ready.
3. The CO monitoring device should be zeroed to manufactures specs outside the structure and away from fire apparatus.
4. The 1st reading should be taken outside the structure and recorded.
5. The 2nd reading should be taken just inside the structure and recorded.
6. If readings inside the structure are above 35 PPM, fire fighters will complete donning of the SCBA before continuing operations in the structure.
7. Readings should be taken and recorded in all rooms of the structure.
8. If CO exists, advise the occupants to notify the gas company and or the heating company to respond.
9. The Officer in Charge will complete the Notice of Findings Form, and inform the occupants(s) accordingly.

Mutual Aid Response:

The Grand Rapids Fire Department shall provide Mutual Aid CO response to all neighboring Fire Departments in accordance with our mutual aid contracts. The Grand Rapids Fire Department response will be one fire fighter minimum with turn out gear and SCBA.

The responsible department will be required to supply a fully equipped crew before the Grand Rapids Fire Department personnel enter any structure.

Monitoring Equipment:

All CO monitoring devices will be maintained per manufacturer's specs. CO meters will be included on all weekly equipment check sheets. All personnel should receive periodic training on the use and care of the departments CO monitoring during Monthly Air Pack Maintenance inspections or as per manufacturers specifications.

Evacuation:

Reading of 100 PPM shall require immediate evacuation of the structure.

Reading of 10 to 99 PPM requires informing occupants that exposure over a period of time is dangerous and may cause severe illness.

Readings of 0 to 9 PPM shall be considered low risk.

WILDLAND FIRES

GOAL: To establish a Response and Operating Guideline for brush, grass, and wildland fires in the Grand Rapids Fire Department coverage area.

DEFINITION: Forest Fire means an uncontrolled wild or running fire occurring on forest, marsh, field, cutover, or other lands. (Wisconsin Statute 26.11 (2))

- A. **GUIDELINE:** The Town of Grand Rapids consists of 2 separate classifications as far as jurisdictional responsibilities under the Wisconsin Statutes, therefore responses and operations will vary according to the location of the incident.
1. West of 32nd Street: Under the jurisdiction of the Fire Chief who is in charge of suppression and investigation of such fires.
 2. East of 32nd Street: Under the Wisconsin Department of Natural Resources INTENSIVE Forest Fire Protection Area. DNR has the primary responsibility to suppress and investigate all wildland or forest fires.
- B. **PROCEDURE:**
1. West of 32nd Street:
 - a. Dispatch will page the GRVFD.
 - b. Response will be as per APPARATUS RESPONSE GUIDELINES
 - c. Fire Department Officer will be in-charge as per INCIDENT COMMAND PROCEDURES.
 - d. Mutual aid can be requested from DNR if necessary, but Fire Department is still in charge.
 2. East of 32nd Street:
 - a. If Dispatch receives a call regarding a wildland fire in the INTENSIVE area, Dispatch will page out DNR Fire Control and the Fire Department.
 - b. Respond as per APPARATUS RESPONSE GUIDELINES.
 - c. DNR Fire Control personnel, if present, will assume Command of the fire. Consultation between DNR and the Fire Department Officer should be held to coordinate suppression efforts and clarify the Fire Department's role.
 - d. On large, complex forest fires, the Fire Department will follow the DNR's STRUCTURAL FIRE PROTECTION GUIDE.

- e. If DNR is not present, and is not in radio contact, suppression efforts will be made by the Fire Department and incident management will be by Fire Department Guidelines.

Revised on March 3, 2008